

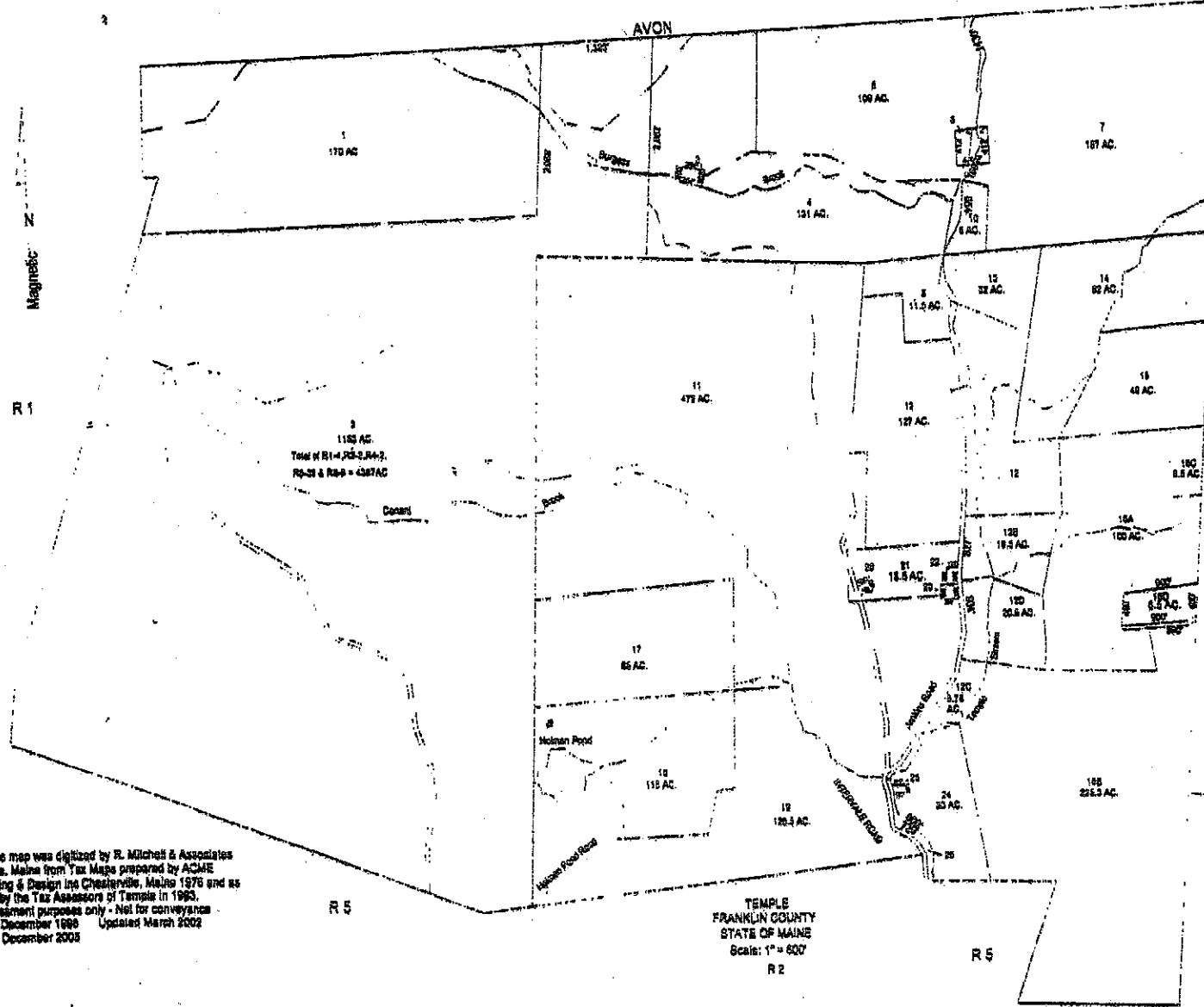
Note: This map was digitized by R. Mitchell & Associates of Temple, Maine from Tax Maps prepared by Acme Engineering & Design, Inc. Chesapeake, Maine 1976 and as updated by the Tax Assessors of Temple in 1983

For assessment purposes only - Not for conveyance
 Updated March 1993
 Updated December 1998
 Updated March 2002
 Updated December 2005

Temple
 Franklin County
 State of Maine

Sheet 1 of 20

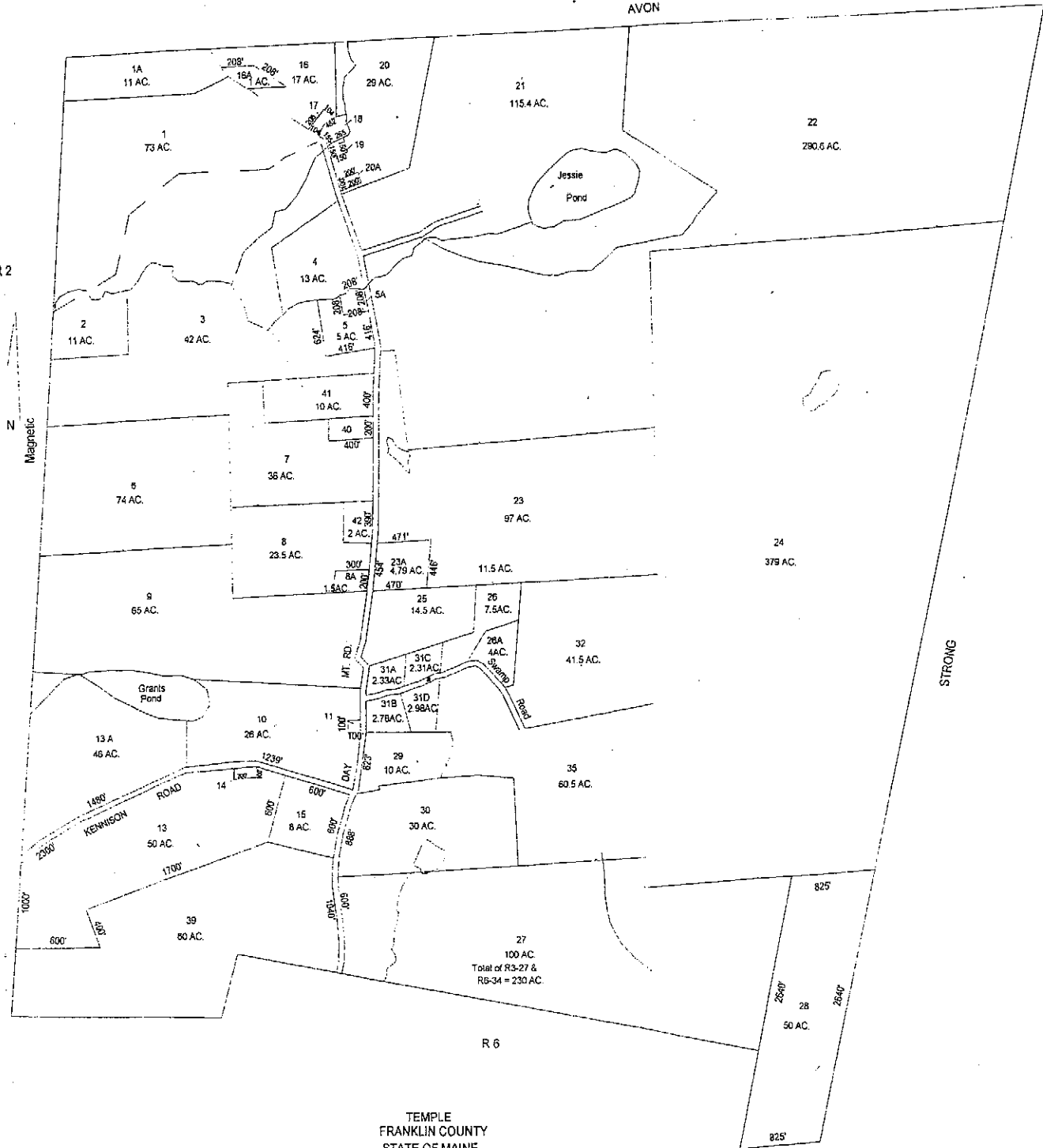
R 1



Note: This map was digitized by R. Mitchell & Associates of Temple, Maine from Tax Maps prepared by ACME Engineering & Design Inc. Chesterville, Maine 1976 and as updated by the Tax Assessors of Temple in 1990. For assessment purposes only - Not for conveyance. Updated December 1999 Updated March 2002 Updated December 2005

AVON

R 2



STRONG

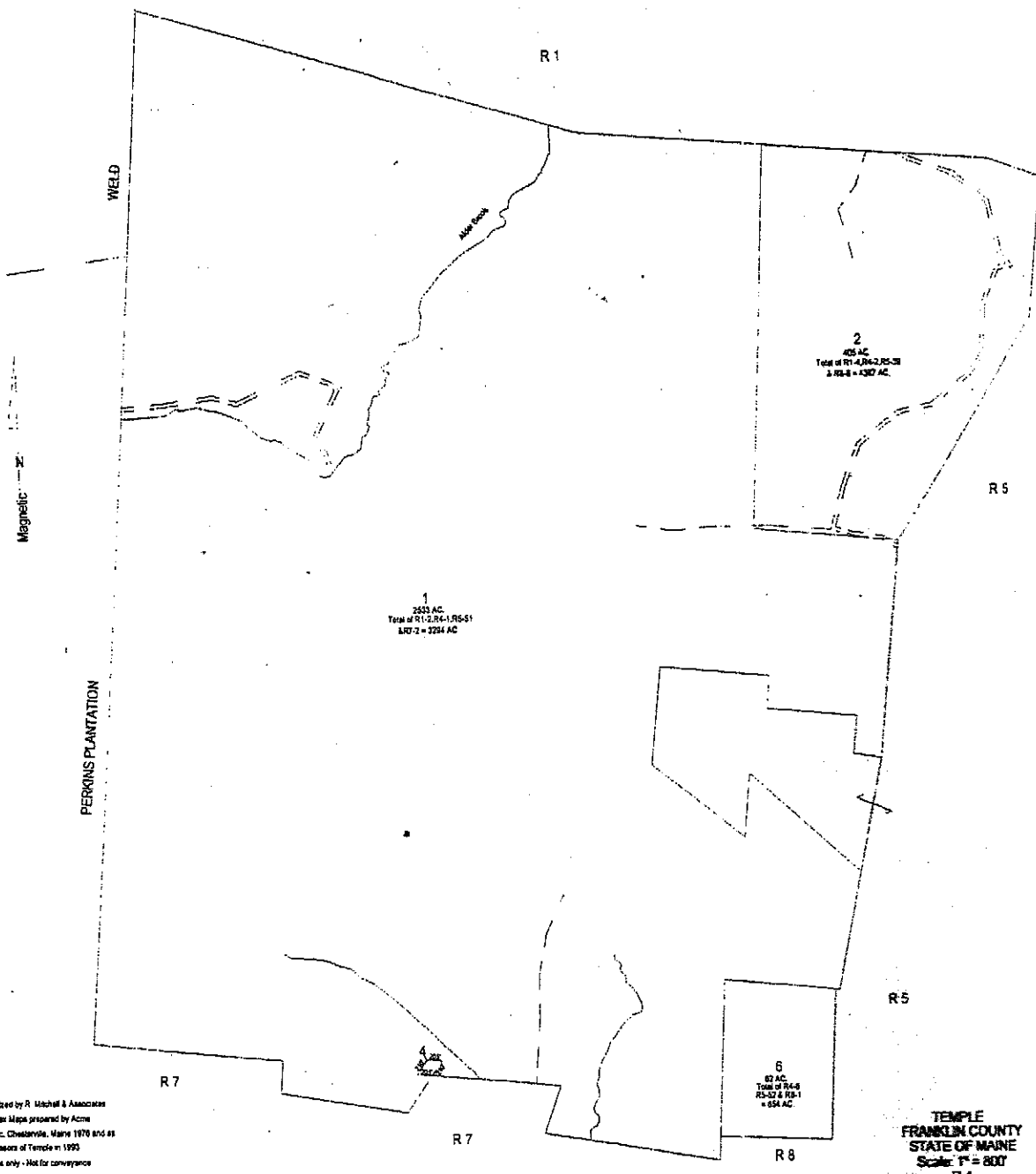
R 6

TEMPLE
FRANKLIN COUNTY
STATE OF MAINE

Scale: 1" = 500'

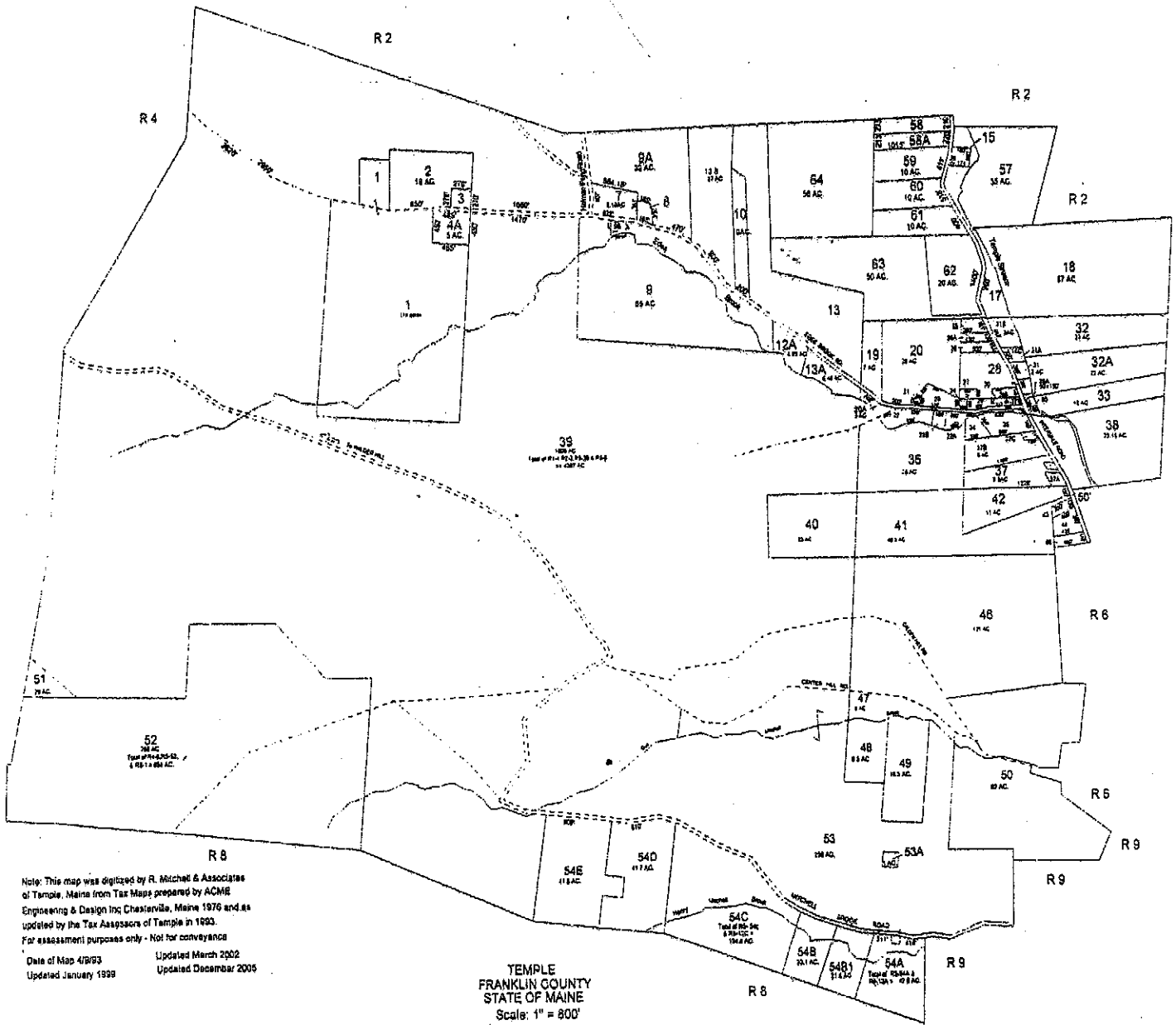
R 3

Note: This map was digitized by R. Mitchell & Associates of Temple, Maine from Tax Maps prepared by Acme Engineering & Design, Inc. Chesterville, Maine 1976 and as updated by the Tax Assessors of Temple in 1993
 For assessment purposes only - Not for conveyance
 Updated January 1999 Updated March 2002.
 Updated December 2005



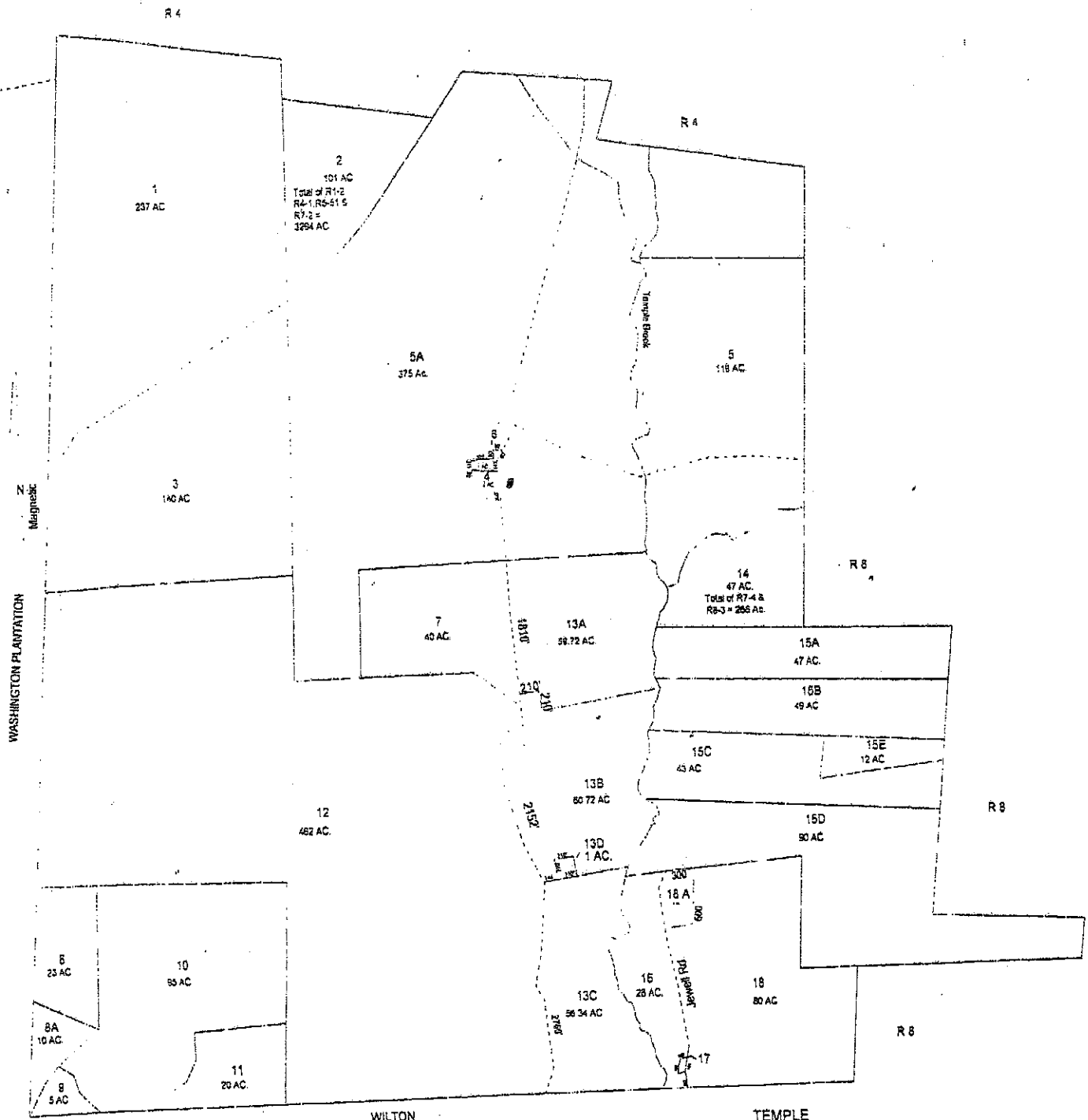
Note: This map was digitized by R. Michell & Associates of Temple, Maine from Tax Maps prepared by Acme Engineering & Design, Inc., Chesterville, Maine 1970 and as updated by the Tax Assessors of Temple in 1993.
 For assessment purposes only - Not for conveyance
 Updated March 1993. Updated March 2002
 Updated January 1988. Updated December 2003

TEMPLE
 FRANKLIN COUNTY
 STATE OF MAINE
 Scale: 1" = 800'
 R 4



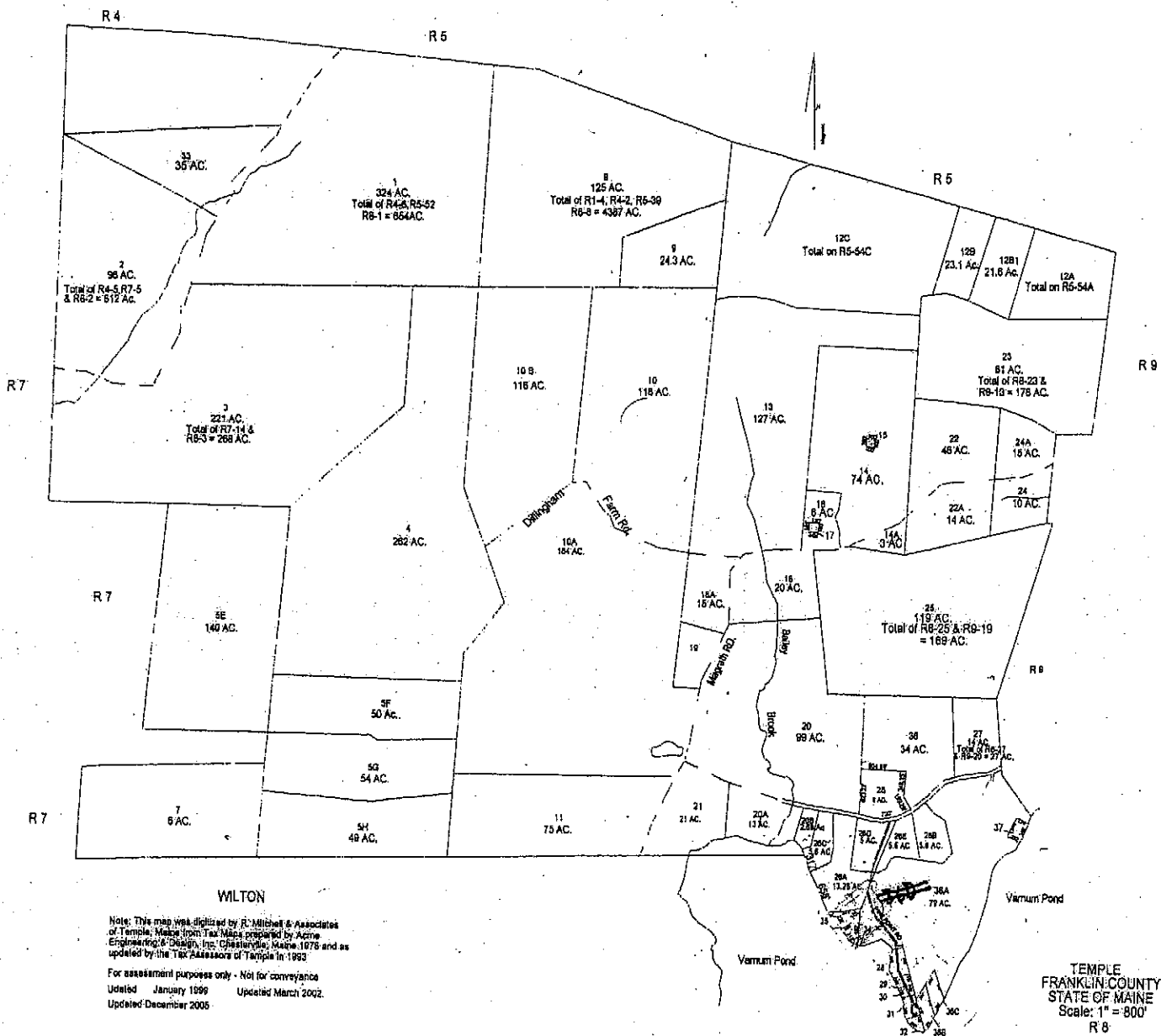
Note: This map was digitized by R. Mitchell & Associates of Temple, Maine from Tax Maps prepared by ACME Engineering & Design Inc, Chesterville, Maine 1976 and as updated by the Tax Assessors of Temple in 1993.
 For assessment purposes only - Not for conveyance
 Date of Map 4/9/93 Updated March 2002
 Updated January 1999 Updated December 2005

TEMPLE
 FRANKLIN COUNTY
 STATE OF MAINE
 Scale: 1" = 800'
 R 5



Note: This map was digitized by R. Mitchell & Associates of Temple, Maine from Tax Maps prepared by Acme Engineering & Design, Inc. Chesterville, Maine 1976 and as updated by the Tax Assessors of Temple in 1993. For assessment purposes only - Not for conveyance. Updated January 1999. Updated March 2002. Updated December 2005.

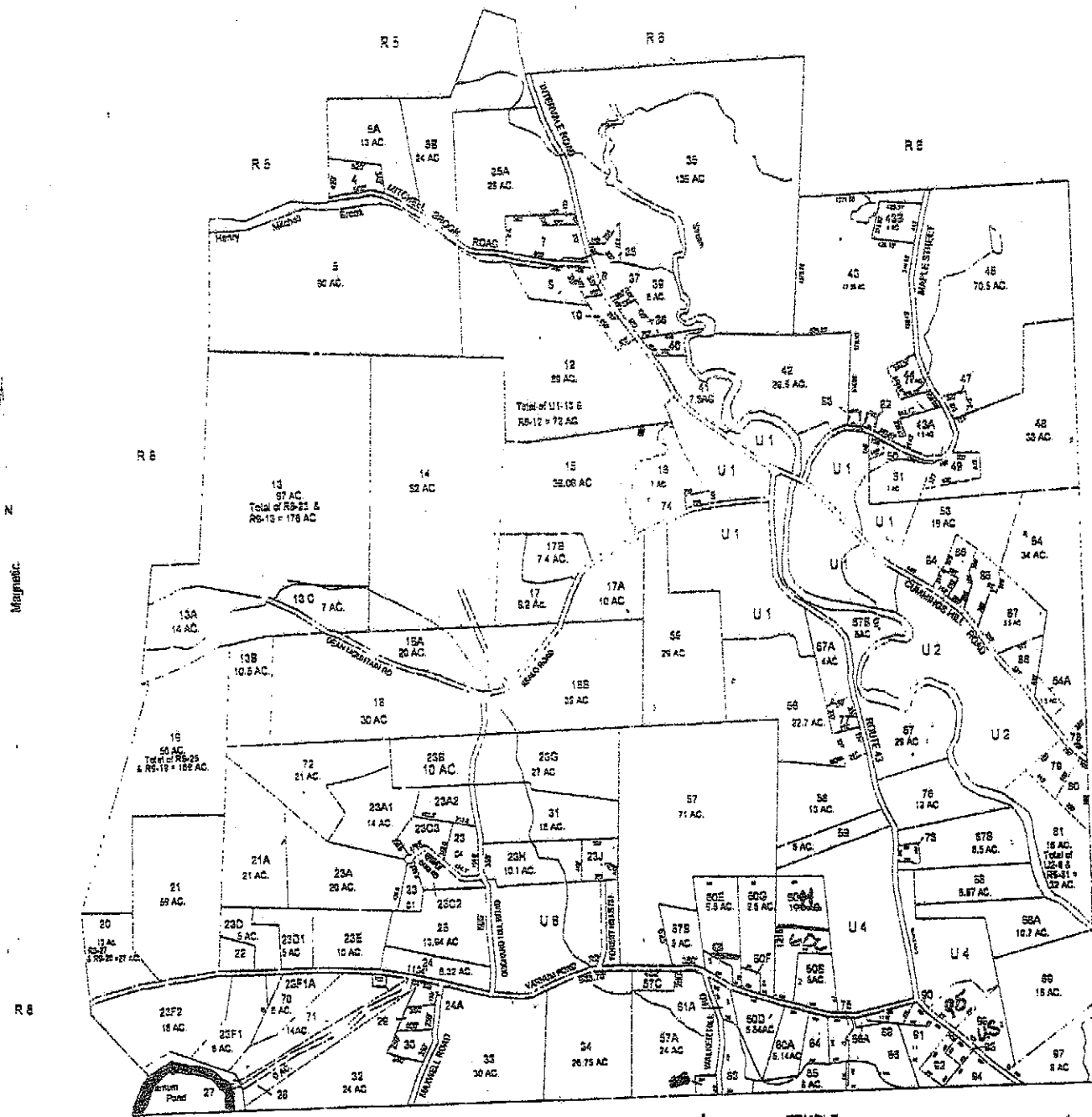
TEMPLE
FRANKLIN COUNTY
STATE OF MAINE
Scale: 1" = 600'
R 7



Note: This map was digitized by R. Mitchell & Associates of Temple, Maine from Tax Maps prepared by Acme Engineering & Design, Inc., Orono, Maine, 1978 and as updated by the Tax Assessors of Temple in 1993.

For assessment purposes only - Not for conveyance
 Updated January 1999 Updated March 2002
 Updated December 2005

TEMPLE
 FRANKLIN COUNTY
 STATE OF MAINE
 Scale: 1" = 800'
 R 8



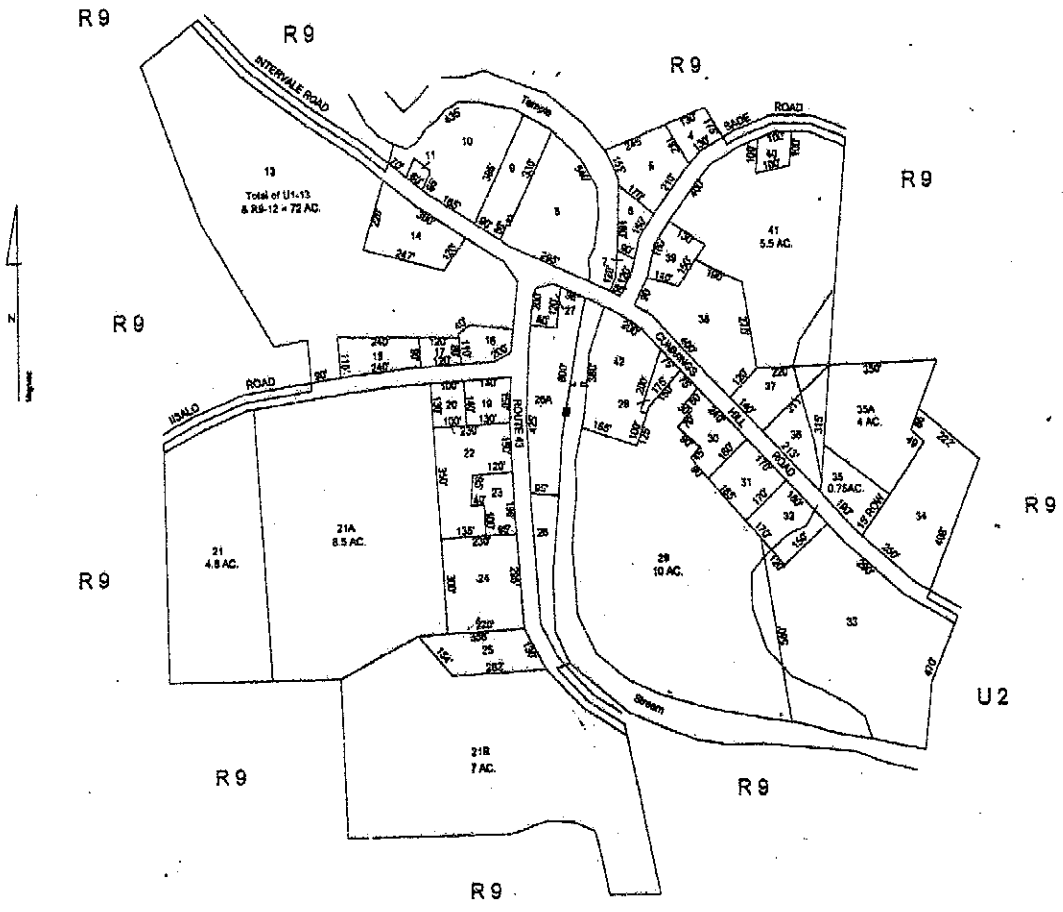
FARMINGTON

WILTON

570

TEMPLE
FRANKLIN COUNTY
STATE OF MAINE
Scale: 1" = 600'
R 9

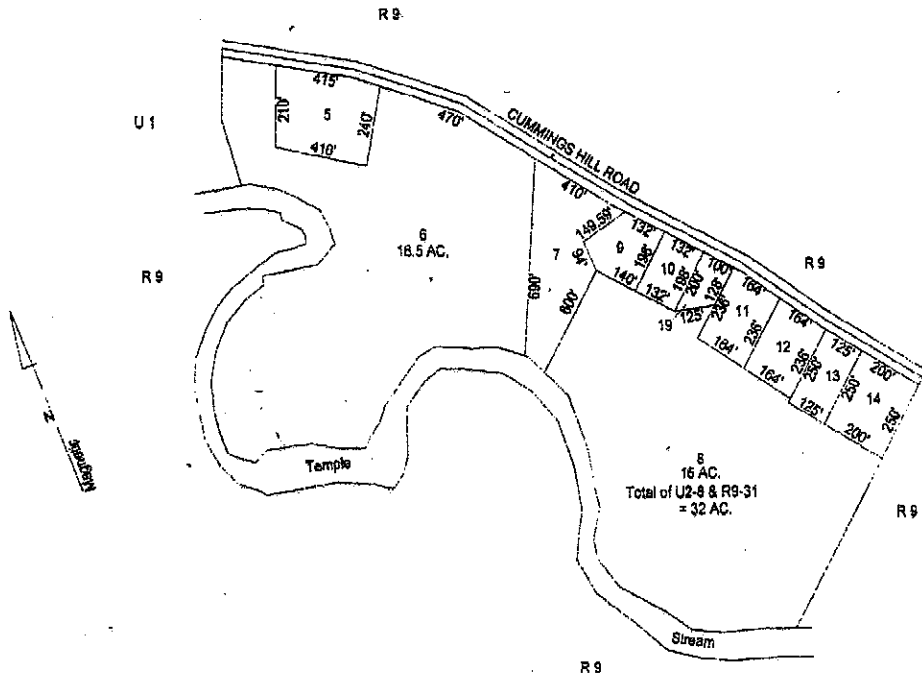
Note: This map was digitized by R. Mitchell & Associates of Temple, Maine from Tax Maps prepared by ACME Engineering & Design Inc. Chesterville, Maine 1978 and as updated by the Tax Assessors of Temple in 1993. For assessment purposes only - Not for conveyance Updated January 1996. Updated March 2002 Updated December 2006



Note: This map was digitized by R. Mitchell & Associates of Temple, Maine from Tax Maps prepared by Acme Engineering & Design, Inc. Chesterville, Maine 1976 and as updated by the Tax Assessors of Temple in 1983.

For assessment purposes only - Not for conveyance
 Updated March 1993
 Updated January 1998
 Updated March 2002
 Updated-December 2005

TEMPLE
 FRANKLIN COUNTY
 STATE OF MAINE
 Scale: 1" = 200'
 U 1

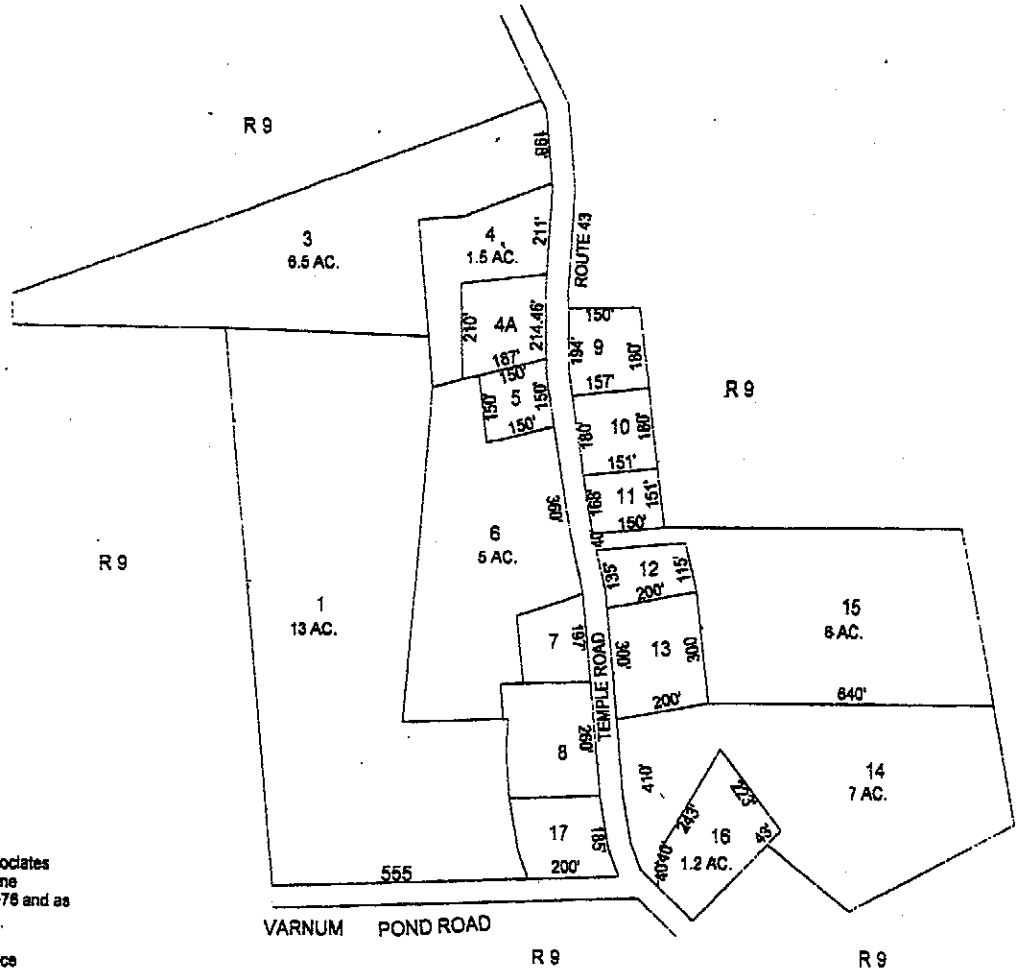
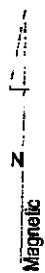


Note: This map was digitized by R. Mitchell & Associates of Temple, Maine from Tax Maps prepared by Acme Engineering & Design, Inc. Chesterville, Maine 1976 and as updated by the Tax Assessors of Temple in 1993.

For assessment purposes only - Not for conveyance
 Updated March 1993
 Updated January 1999
 Updated January 2002
 Updated December 2005

TEMPLE
 FRANKLIN COUNTY
 STATE OF MAINE
 Scale: 1" = 200'

U 2



Note: This map was digitized by R. Mitchell & Associates of Temple, Maine from Tax Maps prepared by Acme Engineering & Design, Inc. Chesterville, Maine 1976 and as Updated by the Tax Assessors of Temple in 1993.

For assessment purposes only - Not for conveyance
Updated January 1999 Updated March 2002
Updated December 2005

TEMPLE
FRANKLIN COUNTY
STATE OF MAINE
Scale: 1" = 200'
U 4